

Type CH Space-Maker Conduit Hubs For RMC and IMC

NEC/CEC — Suitable for use in:
Class I, Division 2

Applications

- General purpose, suitable for use with heavy wall cabinets.

Features

- Female bushed nipple type.
- Female thread for rigid conduit and IMC.
- Takes less space.
- Recessed O-ring seal outside the box provides a watertight threaded hub on enclosures.
- Suitable for use with service entrance conduit.

Material/Finish

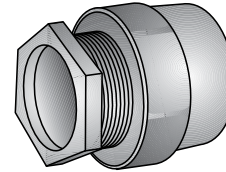
- Ductile iron/zinc electroplate
- Gasket: neoprene

Options

- For additional corrosion protection, specify Mechanically Galvanized. Contact your local representative for pricing and availability

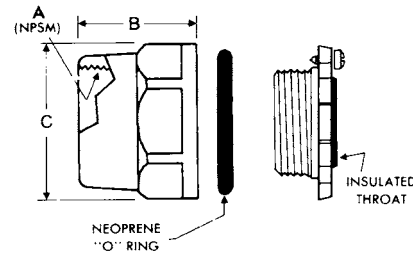
NEC/CEC Certifications and Compliances

- UL Standard: 514B
- UL Listed: E-14814
- CSA Standard: C22.2 No. 18.3
- CSA Certified: 065178
- NEMA: FB-1



Type CH

Illustrated Dimensions



OZGEDNEY

COMMERCIAL AND INDUSTRIAL FITTINGS: RIGID AND IMC CONDUIT FITTINGS

| Trade Size (Inches) | Dimensions in Millimeters (Inches) | | | Max. Box Wall Thick. | Catalog Number | Insulated Throat Catalog Number |
|---------------------|------------------------------------|--------------|-----------------------------|----------------------|----------------|---------------------------------|
| | B | C | A Female Tapered NPSM | | | |
| 1/2 | 28.7 (1.13) | 31.8 (1.25) | 12.7 (0.50) - 355.6 (14.00) | 4.1 (0.16) | CH-50 | CH-50T |
| 3/4 | 31.8 (1.25) | 41.4 (1.63) | 19.1 (0.75) - 355.6 (14.00) | 7.1 (0.28) | CH-75 | CH-75T |
| 1 | 35.1 (1.38) | 44.5 (1.75) | 25.4 (1.00) - 292.1 (11.50) | 7.9 (0.31) | CH-100 | CH-100T |
| 1-1/4 | 44.5 (1.75) | 57.2 (2.25) | 31.8 (1.25) - 292.1 (11.50) | 11.9 (0.47) | CH-125 | CH-125T |
| 1-1/2 | 47.8 (1.88) | 63.5 (2.50) | 38.1 (1.50) - 292.1 (11.50) | 12.7 (0.50) | CH-150 | CH-150T |
| 2 | 44.5 (1.75) | 79.5 (3.13) | 50.8 (2.00) - 292.1 (11.50) | 16.8 (0.66) | CH-200 | CH-200T |
| 2-1/2 | 63.5 (2.50) | 95.3 (3.75) | 63.5 (2.50) - 203.2 (8.00) | 16.8 (0.66) | CH-250 | CH-250T |
| 3 | 92.2 (3.63) | 111.3 (4.38) | 76.2 (3.00) - 203.2 (8.00) | 18.3 (0.72) | CH-300 | CH-300T |
| 3 -/2 | 69.9 (2.75) | 127.0 (5.00) | 88.9 (3.50) - 203.2 (8.00) | 20.5 (0.81) | CH-350 | CH-350T |
| 4 | 69.9 (2.75) | 139.7 (5.50) | 101.6 (4.00) - 203.2 (8.00) | 16.0 (0.63) | CH-400 | CH-400T |
| 5 | 69.9 (2.75) | 174.8 (6.88) | 127.0 (5.00) - 203.2 (8.00) | 16.0 (0.63) | CH-500 | CH-500T |
| 6 | 69.9 (2.75) | 196.9 (7.75) | 152.4 (6.00) - 203.2 (8.00) | 23.9 (0.94) | CH-600 | CH-600T |